



**Check out
OAC's expanded
retail store!**

We stock bike helmets,
flat tire repair kits, pumps, components
and other essential accessories.

BIKE RENTALS

OAC offers a great selection of bike rentals
from some of the top names- Trek, Giant,
Specialized and Raleigh. OAC also carries both
2 and 4-bike carrying racks for your car or SUV.
Daily, weekend and weekly rates available.

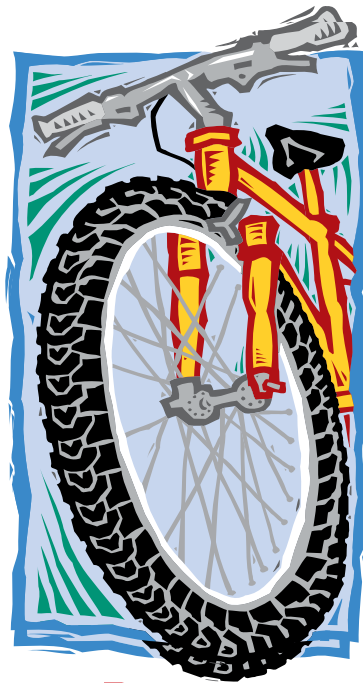
Outdoor Adventure Center
634-2054

The Bike Barn is open during
regular business hours.



07.22.16

**Beale's Full Service
Bike Shop**



**BIKE
BARN**

**Tune-ups
Safety Checks • Flat Repair
Parts & Accessories**



**Check out
OAC's expanded
retail store!**

We stock bike helmets,
flat tire repair kits, pumps, components
and other essential accessories.

BIKE RENTALS

OAC offers a great selection of bike rentals
from some of the top names- Trek, Giant,
Specialized and Raleigh. OAC also carries both
2 and 4-bike carrying racks for your car or SUV.
Daily, weekend and weekly rates available.

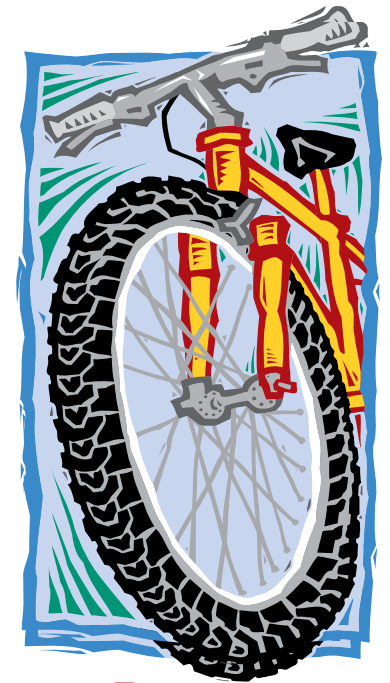
Outdoor Adventure Center
634-2054

The Bike Barn is open during
regular business hours.



07.22.16

**Beale's Full Service
Bike Shop**



**BIKE
BARN**

**Tune-ups
Safety Checks • Flat Repair
Parts & Accessories**



TUNE UPS

Full Tune: \$45⁰⁰

Includes adjusting and servicing brake and shifting systems. Clean and lube all cables and housings. Clean and lube the drive train. Adjustment and servicing of the hubs. Trueing the wheels. Servicing of shifters, if necessary.

Complete Overhaul: \$105⁰⁰

Includes taking the bike apart all the way down to the frame and cleaning and servicing of all bearings, headset, bottom bracket, hubs and pedals if necessary. Also thorough cleaning and lube of all parts.

Tune-ups are recommended every 2,000-4,000 miles!

Additional Cost to Tune-Up

- Repack all bearing surfaces with fresh grease and new ball bearings (Front and rear hubs, bottom bracket and headset). Recommended every 5,000 - 7,000 Miles!
- Parts necessary for tune-up.

Brakes

Adjust Front/Rear Caliper Brakes: \$5⁰⁰ ea.
Adjust Front/Rear Disc Brakes: \$7⁰⁰ ea.
Install Cable and Housing: \$8⁰⁰ ea.
Install Brake Levers: \$10⁰⁰
Install Front/Rear Disc Brakes: \$25⁰⁰
Disc Brake Bleed: \$15⁰⁰

Derailleur / Shifting System

Install Rear Derailleur: \$10⁰⁰
Install Front Derailleur: \$12⁰⁰
Adjust Front / Rear Derailleur: \$7⁰⁰ ea.
Align Derailleur Hanger: \$6⁰⁰
Install Cable and Housing: \$8⁰⁰ ea.
Service Shifter: \$10⁰⁰
Install Shifters: \$15⁰⁰



WHEELS & HUBS



Flat Repair: \$5⁰⁰
Install Cassette: \$8⁰⁰
Cartridge Bearing Install: \$7⁰⁰
Adjust Hub: \$12⁰⁰
Front or Rear Hub Overhaul \$15⁰⁰
Wheel True: \$15⁰⁰
Broken Spoke Repair (Includes Wheel True): \$17⁰⁰
Wheel Build: \$30⁰⁰
Extra charge for replacing spokes.

Miscellaneous

Install Chain: \$5⁰⁰
Install Headset: \$8⁰⁰
Service Headset: \$12⁰⁰
Install Bottom Bracket: \$8⁰⁰
Service Bottom Bracket: \$12⁰⁰
Install Computer: \$6⁰⁰
Install Handlebars: \$10⁰⁰
Fitting Bicycle to Rider: \$15⁰⁰
Bike Assembly: New (in box): \$25⁰⁰
Used: **ask for quote**
Box Bike to Ship: \$25⁰⁰

Prices are for labor charges only and are subject to change. All parts are additional cost. Prices are approximate estimates for repairs.

We can special order any

Salsa
ADVENTURE BY BIKE

Please call for a quote.



Treks, Whitewater Rafting, Sailing, Kayaking and more. OAC is your ticket to adventure!

Outdoor Adventure Center • 634-2054

TUNE UPS

Full Tune: \$45⁰⁰

Includes adjusting and servicing brake and shifting systems. Clean and lube all cables and housings. Clean and lube the drive train. Adjustment and servicing of the hubs. Trueing the wheels. Servicing of shifters, if necessary.

Complete Overhaul: \$105⁰⁰

Includes taking the bike apart all the way down to the frame and cleaning and servicing of all bearings, headset, bottom bracket, hubs and pedals if necessary. Also thorough cleaning and lube of all parts.

Tune-ups are recommended every 2,000-4,000 miles!

Additional Cost to Tune-Up

- Repack all bearing surfaces with fresh grease and new ball bearings (Front and rear hubs, bottom bracket and headset). Recommended every 5,000 - 7,000 Miles!
- Parts necessary for tune-up.

Brakes

Adjust Front/Rear Caliper Brakes: \$5⁰⁰ ea.
Adjust Front/Rear Disc Brakes: \$7⁰⁰ ea.
Install Cable and Housing: \$8⁰⁰ ea.
Install Brake Levers: \$10⁰⁰
Install Front/Rear Disc Brakes: \$25⁰⁰
Disc Brake Bleed: \$15⁰⁰

Derailleur / Shifting System

Install Rear Derailleur: \$10⁰⁰
Install Front Derailleur: \$12⁰⁰
Adjust Front / Rear Derailleur: \$7⁰⁰ ea.
Align Derailleur Hanger: \$6⁰⁰
Install Cable and Housing: \$8⁰⁰ ea.
Service Shifter: \$10⁰⁰
Install Shifters: \$15⁰⁰



WHEELS & HUBS



Flat Repair: \$5⁰⁰
Install Cassette: \$8⁰⁰
Cartridge Bearing Install: \$7⁰⁰
Adjust Hub: \$12⁰⁰
Front or Rear Hub Overhaul \$15⁰⁰
Wheel True: \$15⁰⁰
Broken Spoke Repair (Includes Wheel True): \$17⁰⁰
Wheel Build: \$30⁰⁰
Extra charge for replacing spokes.

Miscellaneous

Install Chain: \$5⁰⁰
Install Headset: \$8⁰⁰
Service Headset: \$12⁰⁰
Install Bottom Bracket: \$8⁰⁰
Service Bottom Bracket: \$12⁰⁰
Install Computer: \$6⁰⁰
Install Handlebars: \$10⁰⁰
Fitting Bicycle to Rider: \$15⁰⁰
Bike Assembly: New (in box): \$25⁰⁰
Used: **ask for quote**
Box Bike to Ship: \$25⁰⁰

Prices are for labor charges only and are subject to change. All parts are additional cost. Prices are approximate estimates for repairs.

We can special order any

Salsa
ADVENTURE BY BIKE

Please call for a quote.



Treks, Whitewater Rafting, Sailing, Kayaking and more. OAC is your ticket to adventure!

Outdoor Adventure Center • 634-2054